



**nehta** National E-Health Transition Authority  
[www.nehta.gov.au](http://www.nehta.gov.au)

**eHealth**

## The latest news from the National E-Health Transition Authority (NEHTA)

**Jan Chaffey**  
**NEHTA Clinical Lead**  
**4 June 2011**

## NEHTA's purpose




Lead the uptake of eHealth systems of national significance; and coordinate the progression and accelerate the adoption of eHealth by delivering urgently needed integration infrastructure and standards for health information

Established and funded by the Australian, State and Territory governments


**nehta** National E-Health Transition Authority  
[www.nehta.gov.au](http://www.nehta.gov.au)

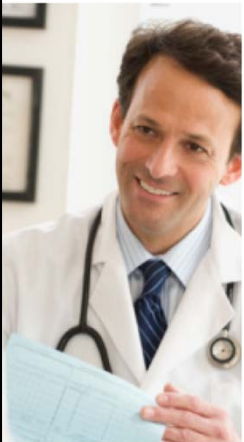
**eHealth**



## NEHTA's place in eHealth

- Increasing involvement in implementation sites
- Managing agent for PCEHR
- Support integration of eHealth
- National eHealth infrastructure

**nehta** National E-Health Transition Authority [www.nehta.gov.au](http://www.nehta.gov.au) 




## Impact on healthcare providers



Up to 18% of medical errors occur as a result of inadequate availability of patient information.<sup>1</sup>

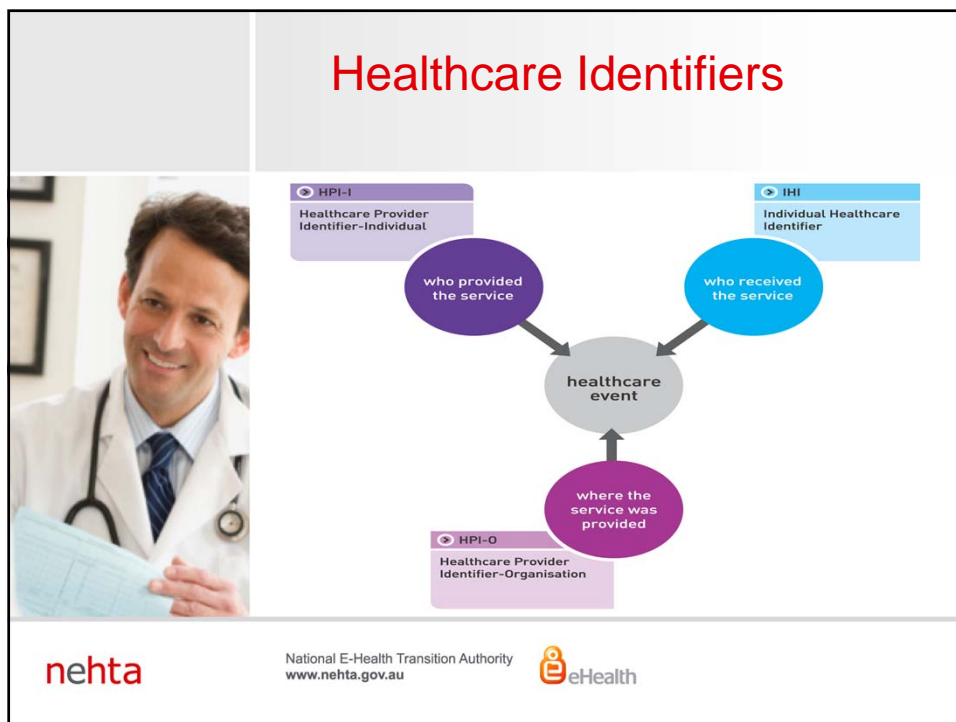
Almost two million Australians experience an adverse drug event each year and approximately 138,000 of these end up in hospital. <sup>2</sup>

53% of medication mistakes are considered 'definitely preventable' and 30% of unplanned hospital admissions in those over 75 years have been associated with medication mistakes. <sup>3</sup>

Healthcare providers spend around 25% of their time collecting information rather than treating patients.<sup>4</sup>

**nehta** National E-Health Transition Authority [www.nehta.gov.au](http://www.nehta.gov.au) 

		National E-Health Transition Authority <a href="http://www.nehta.gov.au">www.nehta.gov.au</a>			
<b>Personally Controlled Electronic Health Record</b>	Clinical Information	Individual Information	Shared Information	[Others]	
<b>E-Health Services</b>	Shared Health Profile	Events Summaries	Self Managed Care	Complex Care Management	
<b>E-Health Solutions</b>	ePathology	eDischarge	eReferral	eMedications	
<b>National Infrastructure Components</b>	Terminology	Secure Messaging	Identifiers	Authentication	



## Identifiers Implementation



A staged approach

The HI Service is not “big bang” but incremental

Early adopters will work with NEHTA and they select their vendor partners

nehta

National E-Health Transition Authority  
www.nehta.gov.au



Frank Harding

Open Request Clinical View Help

Family members: Mr Frank Harding [Jump] [Open]

Frank Harding D.O.B.: 11/05/1946 Age: 64 yrs Sex: Male 2m 41s [Finalise visit]

17 Rosemary Avenue Croydon 3136 Phone: Mobile: Work:

4239158135 - 2 Record No.: Pension No.: Comment:

Retired Tobacco: Ex smoker Alcohol: Light Elite sports: Ethnicity:

Group: Positive

Reactions

Reaction	Severity
Rash	Moderate
Vomiting	Moderate

Actions/Reminders

Type	Due	Reason
Preventive health	27/05/2010	A Diabetes Cycle of Care should be considered

Mr Frank Harding

Today's notes

Past visits

Current Rx

Drug name	Strength	Dose	Quantity	Rpts.	Script type	Regular	Last script
Citalopram 20mg Tablet	20mg	1 In the morning with meals	28	5	FBS	Yes	27/05/2010
Metformin 500mg Tablet	500mg	2 In the morning with meals	100	5	FBS	Yes	27/05/2010

Past history

- Active
  - 11/06/2005 Diabetes Mellitus, NIDDM
  - 24/12/2007 Depression, endogenous
- Inactive

Immunisations

Investigation reports

Correspondence In

Correspondence Out

Past prescriptions

NEHTA Health Identifier Demonstration

Patient: Mr Frank Harding


Date of Birth: 11 May 1946


Medicare Card Number: 4239158135 2

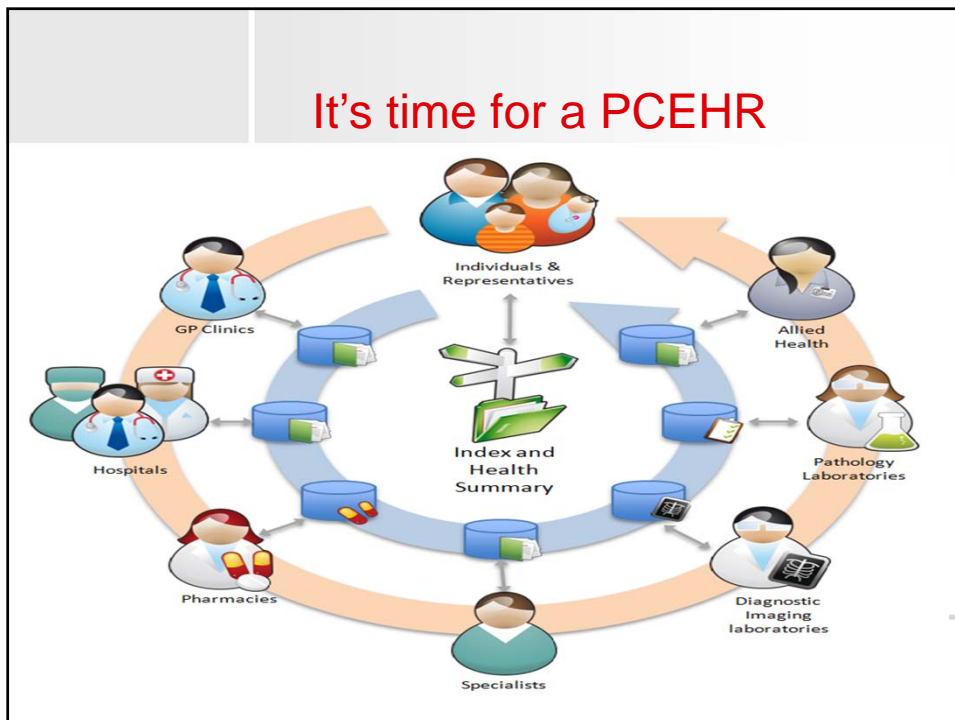
Matching IHI: **8003610200002737**

logged in: Dr Alestair Jones Thursday 27/

## eHealth: making it happen






**nehta** National E-Health Transition Authority [www.nehta.gov.au](http://www.nehta.gov.au) 






	<h2>Benefits (cont'd)</h2>
	<p>Better coordination of care – more effective shared care or supported self managed care means better management of chronic disease and complex health problems</p> <p>Better use of treatment plans – through improved compliance</p> <p>Better performance of healthcare providers – through availability of benchmarking data</p> <p>Better support for clinical trials – leading to more effective healthcare treatments</p>
	<p>National E-Health Transition Authority <a href="http://www.nehta.gov.au">www.nehta.gov.au</a></p> 

	<h2>What do I need to do?</h2>
	<p>Gain an understanding of the intent and scope of the PCEHR</p> <p>Start considering what it will mean for your practice and patient care</p> <p>Discuss with your colleagues</p> <p>Get involved and participate in the Public Consultation process</p>
	<p>National E-Health Transition Authority <a href="http://www.nehta.gov.au">www.nehta.gov.au</a></p> 

## Keeping up with the PCEHR program news




National E-Health Strategy  
[www.health.gov.au](http://www.health.gov.au)

Public domain resources  
<http://www.youtube.com/user/DeptHealthAgeing>

Email alerts – send an update your details via:  
[ehealthsystems@health.gov.au](mailto:ehealthsystems@health.gov.au)

General information  
[www.yourhealth.gov.au](http://www.yourhealth.gov.au)

NEHTA specific information  
[www.nehta.gov.au](http://www.nehta.gov.au)

**nehta** National E-Health Transition Authority [www.nehta.gov.au](http://www.nehta.gov.au) 

## Thank you



**eHealth**

**nehta** National E-Health Transition Authority [www.nehta.gov.au](http://www.nehta.gov.au) 